

# SWISH RECESS BRACKET

## Fitting Instructions

Please keep for future reference

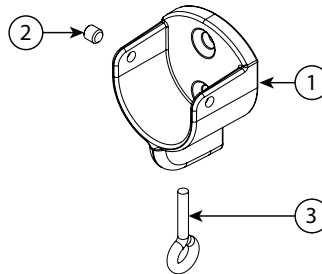
### Tools required



Please read these instructions carefully and check the contents of the pack before attempting to assemble and fix this product.

### Pack Contents

		Components
1	Recess Bracket	1
2	Grub Screw	1
3	Eyelet	1



Should any component be missing, please call the Customer Care Department on **0330 005 2233**.

### Safety Recommendation

Only use a Step Ladder to install this product.

Do Not over reach. Always move the Step Ladder so that you are in a safe working position.

Do Not hold or lean on the pole to support your weight.

We recommend you use two people for installation of larger poles.

Take care when using power tools, use of a Residual Current Device (RCD) is recommended.

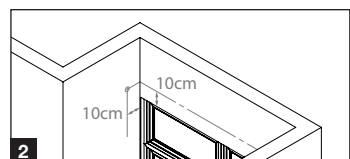
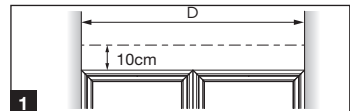
Always use eye protection when drilling. Beware of hidden pipe runs and cables.

No liability will be accepted for damage or injury caused by incorrectly installed or assembled product.

**PLEASE KEEP OUT OF THE REACH OF YOUNG CHILDREN. SMALL PARTS - CHOKING HAZARD**  
**PLEASE KEEP THESE INSTRUCTIONS AND THE BATCH CODE ON THE PACKAGING FOR FUTURE REFERENCE IN CASE OF ANY QUERIES**

### Measuring the Window

1. Measure the recess to ensure you have the correct length of pole required. (fig.1)
2. Mark the position for the pole centre. If possible we recommend to place the centre of the pole, vertically 10cm from the top of the window and horizontally 10cm from the back wall. (fig.2)

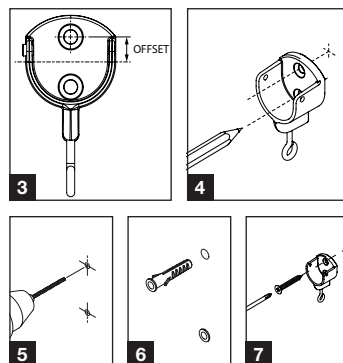


## Fixing the Bracket

1. Mark the top hole position for each bracket, offset from the pole centre line previously marked (fig.3) as per table.
2. Use the bracket as a template to mark the second hole position. (fig.4)
3. Drill the holes using correct drill bit. (fig.5)
4. Fit the correct plugs if fixing on masonry wall. (fig.6)
5. Secure the bracket using the correct screws for your installation. (fig.7)

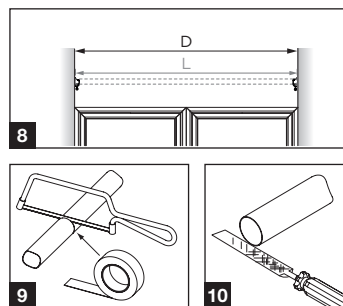
Pole size	Hole offset
19	0.5cm
28	0.9cm
35	1.3cm

Note: Use the correct wall plugs and screws for the type of wall to which you are mounting your pole. If you are unsure please consult your local builders merchant or DIY store.



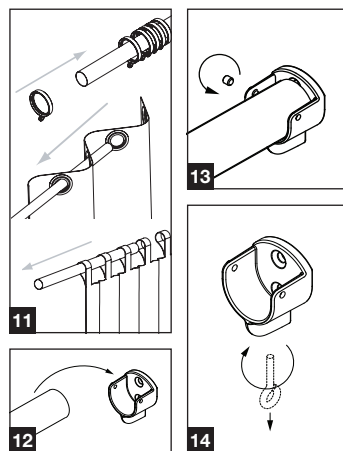
## Cutting the pole

1. Calculate the length of pole required. The length of pole (L) is equal to the width of the recess (D) minus 1.4cm. (fig.8)
2. Mask the area to be cut to avoid damaging the pole, mark the length required and cut the pole. (fig.9)
3. File sharp edges to avoid injury or damage to other components. (fig.10)



## Installing the pole

1. Dependent on your installation and curtain choice, either slide the curtain (eyelet and tab top) or rings onto the pole. (fig.11)
2. Lift the pole (with curtain or rings) into the recess brackets. (fig.12)
3. Tighten the grub screws on the brackets until the pole is firmly fixed in place. (fig.13)
4. For regular curtains place the first hook into the bracket eyelet and then proceed to place all the further hooks into the rings. The curtain eyelet can be adjusted or removed by simply screwing or unscrewing the eyelet. (fig.14)
5. For eyelet and tab top curtains you will need to purchase an eyelet stop or your curtains may not function correctly.



## Testing the curtain

1. Test the installation by drawing the curtain (fig.15). If an eyelet stop is fitted and it does not stop the curtain from sliding along the pole, you may need to reposition it and tighten it further.

