



ASSEMBLY INSTRUCTIONS

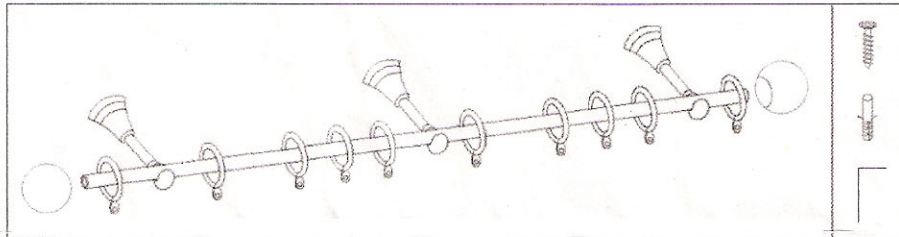
1. Check that you have all the components you require in the pack, and remove all the protective wrapping.

1.2 mt & 1.8 mt Rails

1 Rod
2 Finials
2 Brackets
Rings
Screws, Wallplugs & Hex Key

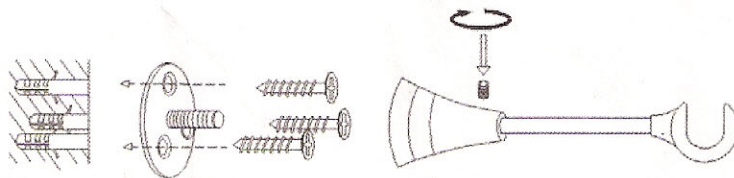
2.4 & 3.0 mt Rails

2 Rods
2 Finials
3 Brackets
Rings
Connecting Piece
Screws, Wallplugs & Hex Key

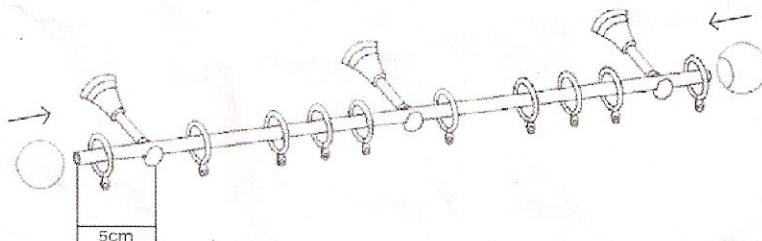


You will also need a cross-ended screwdriver, a hammer, a vice, a spirit level, and a drill with a 6mm bit. If you need to shorten your pole you will also need a hacksaw. If your walls are not solid (i.e. not brick or breezeblock) you may need to purchase special fixings and should consult your local hardware store.

2. Ideally the rod should be 20-30cm (8-12 inches) longer than the window width. The brackets will then be positioned wider than the window allowing maximum light to enter when the curtains are open. The ideal positioning above the window should be 10cm (4").
3. If the rod needs to be shortened, mark off the required length using a piece of masking tape, or scoring the surface lightly. Clamp the rod inside a vice, first wrapping it in a soft cloth for protection, and cut neatly, using a hacksaw. For rails that consist of 2 rods, both rods should be shortened by the same amount.
4. To make the 2.4 and 3.0mt rail, push the connecting piece halfway into one tube and then push the other tube over the connecting piece until the tubes meet. The third bracket provided will hide the centre join.
5. Slide on all rings then push one finial into each end of the rod. Position the brackets in the correct place and tighten the front posidrive screw with the cross-ended screwdriver to hold the brackets to the pole.
6. Ensure that the rail is horizontal by using a spirit level, and mark the bracket positions on the wall. Remove the brackets from the pole.
7. Remove the back plate and cover from the wall end of the bracket by loosening the grub screw with the hex key. Mark the screw holes on the wall, and then drill using a 6mm bit, if using wallplugs. For the 2.4 & 3mt pole ensure that the third bracket is placed centrally to cover the join in the pole.



8. Hammer the wallplugs into each hole, and then screw the bracket back plates into position. Replace the back plate cover and the bracket stem and tighten the grub screw.
9. Place the rail in position on the brackets, ensuring one ring on each end is positioned between the finial and the bracket. Tighten the brackets using the cross-ended screwdriver to hold the rail in place.



CARE AVOID EXCESSIVE DAMPNNESS, WHICH MAY CAUSE RUST SPOTS TO DEVELOP.