

SWISH DESIGN STUDIO BAY KIT

Fitting Instructions

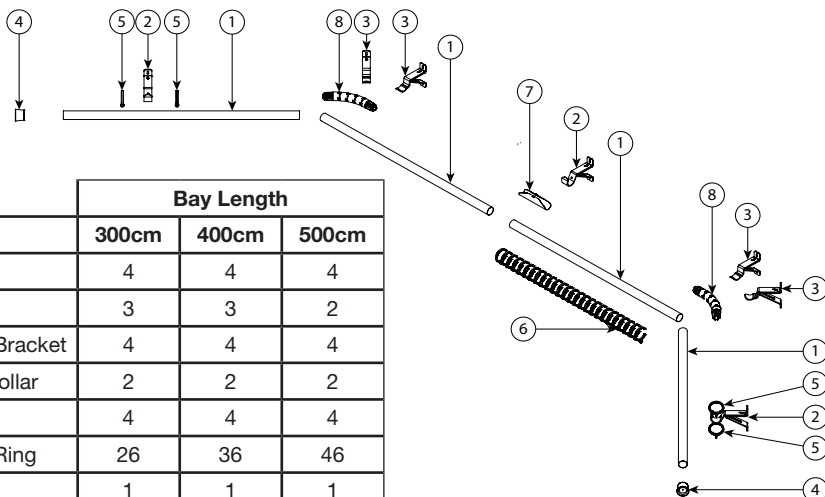
Please keep for future reference

Tools required



Please read these instructions carefully and check the contents of the pack before attempting to assemble and fix this product.

Pack Content



		Bay Length		
Parts		300cm	400cm	500cm
1	Pole	4	4	4
2	Bracket	3	3	2
3	Pass Over Bracket	4	4	4
4	Standard Collar	2	2	2
5	Solid Ring	4	4	4
6	Pass Over Ring	26	36	46
7	Joiner	1	1	1
8	Bay Corner	2	2	2

Should any component be missing, please call the Customer Care Department on **0330 005 2233**.

Safety Recommendation

Only use a Step Ladder to install this product.

DO NOT over reach. Always move the Step Ladder so that you are in a safe working position.

DO NOT hold or lean on the pole to support your weight.

We recommend you use two people for installation of larger poles.

Take care when using power tools, use of a Residual Current Device (RCD) is recommended.

Always use eye protection when drilling. Beware of hidden pipe runs and cables.

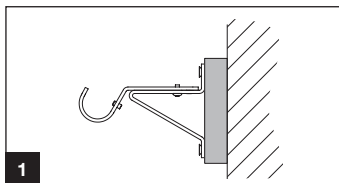
No liability will be accepted for damage or injury caused by incorrectly installed or assembled product.

PLEASE KEEP OUT OF THE REACH OF YOUNG CHILDREN. SMALL PARTS - CHOKING HAZARD
PLEASE KEEP THESE INSTRUCTIONS AND THE BATCH CODE ON THE PACKAGING FOR FUTURE
REFERENCE IN CASE OF ANY QUERIES

Fitting Recommendation

We recommend for better support to fit the pole to a secure wooden batten which is larger than the width of the backplate. (fig.1)

If you are unsure if the product is suitable please ask advice from a professional builder or your DIY store.

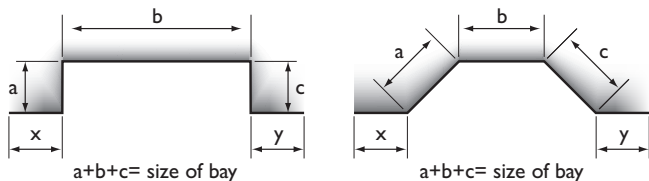


Measuring the Window (fig.2a,2b,2c)

Straight lengths over 180cm will require an centre support bracket.

Should you wish to dress your curtains outside of the bay recess, this is possible by reverse bending 2 extra corner joints and installing extra brackets (both sold separately). You will need to add x+y into your pole calculations and the minimum length for x or y is 10cm.

2a

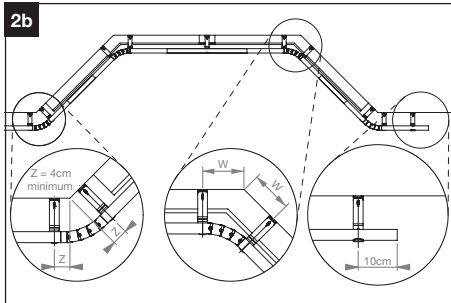


Calculate the position of the pass over brackets at W and Z by laying the bay pole parts out on the floor of your bay window (fig.2b), ensuring that the brackets are at the desired projection (see step 5 of the "Wall Fixing the Bracket" section).

Calculate the bracket position so that the centre of the bracket is as near as possible to the outer metal edges of the bay corner. You will need to bend the bay corner to the correct angle, see "Fitting the Bay Corner". Please Note that for reversed corners the centre of the bracket has to be at least 4cm from the edge of the wall.

Calculate the end bracket so its centre is around 10cm for the desired end of the pole.

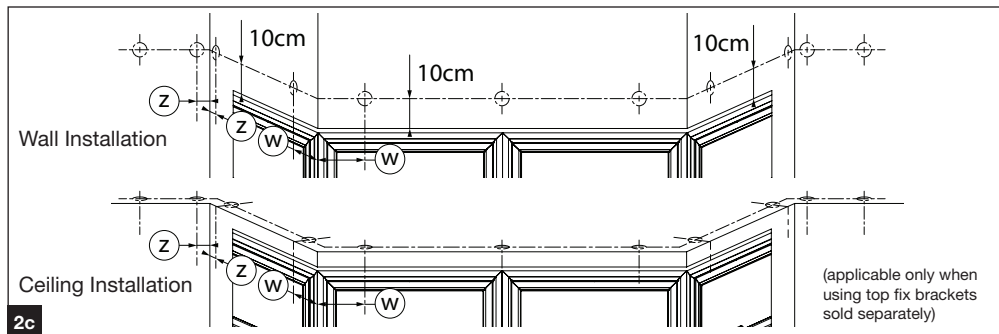
2b



DO NOT CUT THE POLES!

The pass over brackets should support the joint between the bend and the pole.

Mark the pole centre line on the wall and then mark the positions of the brackets on the wall using fig.2c below as a guide.

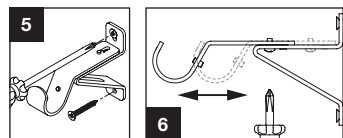
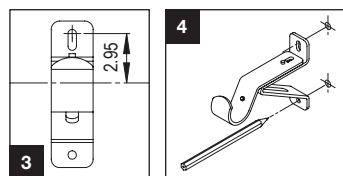


2c

Note: Use the correct wall plugs and screws for the type of wall or ceiling to which you are mounting your pole. If you are unsure please consult your local builders merchant or DIY store.

Wall Fixing the Bracket

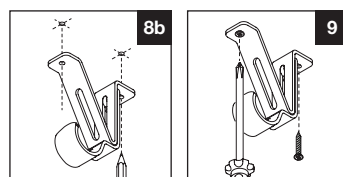
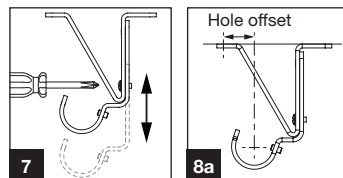
1. Mark the top hole position for each bracket offset by 2.95cm from the pole centre line previously marked. (fig.3)
2. Use the bracket as a template to mark the second hole position onto the wall. (fig.4)
3. Drill holes and fit the correct plugs if fixing on masonry wall.
4. Fix the bracket using the correct screws. (fig.5)
5. The bracket can be adjusted in projection by unscrewing the inner screw. Once in the desired position, lock in place by tightening the inner screw. (fig.6)



Ceiling Fixing the Bracket (sold separately)

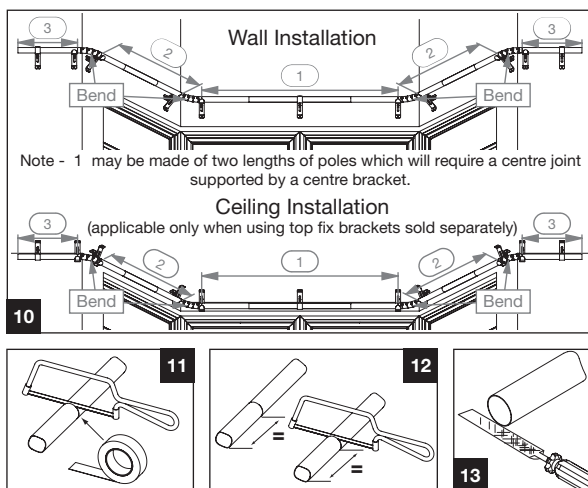
1. The bracket can be adjusted to 3 positions by unscrewing the inner screw completely and tightening it back in the next available position. (fig.7)
2. Mark the front hole position for each bracket offset from the pole centre line previously marked (fig.8a) as per table.
3. Use the bracket as a template to mark the second hole position onto the ceiling. (fig.8b)
4. Drill holes and fit the correct plugs if fixing on masonry ceiling.
5. Fix the bracket using the correct screws. (fig.9)

Pole size	Hole offset
19	2.9cm
28	2.1cm
35	1.1cm



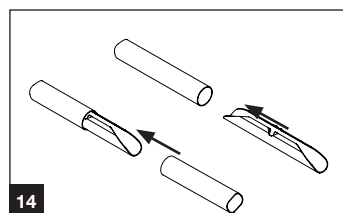
Cutting the pole

1. Starting in the middle of the window (fig.10), build the pole outwards cutting the poles to length as required. Calculate each length of pole by measuring the distance between bracket centres, add 4cm to the poles connecting to a bend, add 10cm to the poles connecting to a finial.
2. Mask area to be cut to avoid damaging pole. (fig.11)
3. When using two poles cut equal lengths from each pole. (fig.12)
4. File sharp edges to avoid injury or damage to other components. (fig.13)



Joining poles (fig.14)

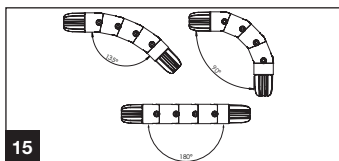
1. Join poles if required by sliding a joining piece into the uncut end of a pole.
2. Slide the second pole onto the joining piece taking care to push equal lengths of the joiner into each pole.
3. Always join the uncut ends of the pole.
4. Pole joints should always be at the half way point of the installation length and supported with a bracket.



Fitting the Bay Corner

1. Adjust the bay corner into the desired angle by loosening the segment screws. Once in the desired position re-secure the screws. (fig.15)
2. Slide the poles onto the plastic bung ends of the bay corners. (fig.16)

Bay corners should always be supported by two pass over brackets.



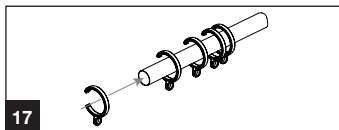
15



16

Preparing the curtain (fig.17)

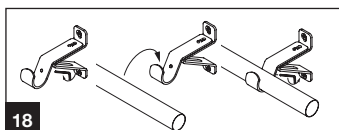
1. Leave the solid rings aside, slide the pass over rings and 1 solid rings onto the pole, approximately 1 ring per 100mm of pole, ensuring that 1 solid ring goes on last.
2. When using a centre bracket an equal number of rings will need to be used either side of the bracket.



17

Fixing the pole (fig. 18)

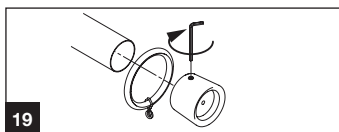
1. Loosen the grub screw on the bracket.
2. Place pole in bracket.
3. Tighten the grub screw until the pole does not slide in the bracket.



18

Fixing the collar (fig.19)

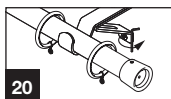
1. Position one solid ring between the bracket and the collar.
2. Push the collar onto the end of the pole.
3. Tighten the grub screw on the collar.



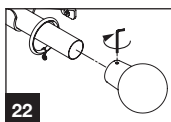
19

Fixing the finial

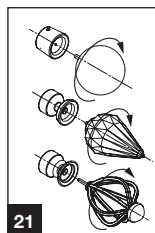
1. If the collar is already installed on the pole, unscrew the grub screw and remove the collar. We do not recommend installing the finial while the collar is fitted as it could scratch the pole. (fig.20)
2. Screw the finial on the cup end of the collar. Please note that different design are available through the range. (fig.21)
3. Push the finial onto the end of the pole. (fig.22)
4. Tighten the grub screw on the collar.



20



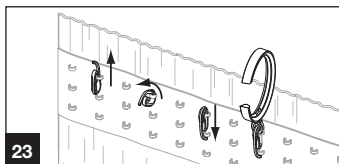
22



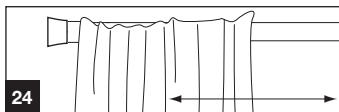
21

Installing the curtain

1. Equally space curtain hooks along curtain header, you will require one hook for every ring. (fig.23)
2. Place hooks through the eyelet on the ring. (fig.23)
3. Test the installation by drawing the curtains across the pole. (fig.24)



23



24