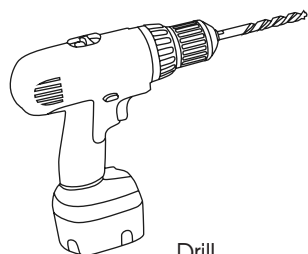


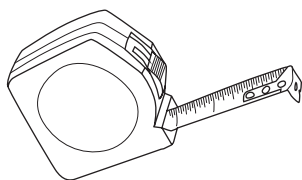
Curtain Pole

Fitting Instructions

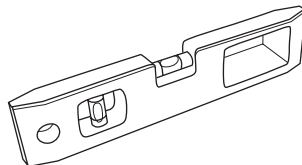
Tools you will need...



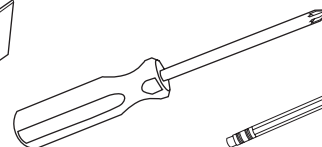
Drill



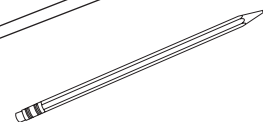
Tape Measure



Spirit Level



Screwdriver



Pencil

how to... fit your curtain pole

Step 1: As a guideline we recommend that the brackets are positioned 10cm up and 10cm out from both sides of the window frame (you may use a spirit level for accuracy). Add a centre bracket if fitting a pole length of 200cm or above.

Step 2: Unscrew the back plate from the bracket (by turning anti clockwise), and position on the wall where the bracket will be fitted. Use a pencil to mark the exact position of the screw holes that will fix the brackets to the wall.

Step 3: Drill into the wall at the marked positions using an appropriate drill bit for the type of wall. Insert wall plugs, ensuring they are flush with the wall. Then screw the back plate into place using the three screws provided.

Step 4: Finally screw the bracket onto the back plate on the wall, turning clockwise. Ensure the cup is facing upwards.

Step 5: Check that the pole fits the window. If needed, cut the curtain pole to size using a hacksaw (if using 2 poles, ensure each pole is of equal length), then drill 3mm holes exactly in the centre of the pole ends. We recommend that the pole length is long enough so that it is approx. 20cm beyond each side of the window frame. (This allows on each side 10cm to the bracket fixing, then another 10cm to the end of the pole).

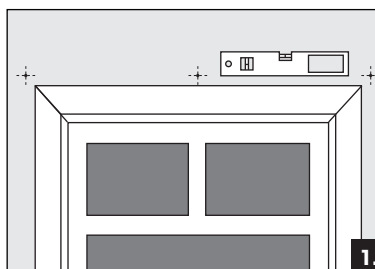
Step 6: If fitting recess brackets please follow steps 3 to 4. Once the bracket has been fitted cut the curtain pole using a hacksaw approx. 22mm on each end to ensure it sits tightly in to the bracket (if your only using one recess bracket this will only need to be done on one end and if using 2 poles, ensure each pole is of equal length).

Step 7: If joining two poles together, use the double ended joining screw in the middle.

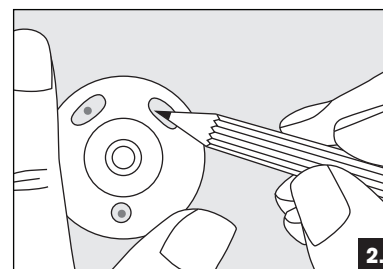
Step 8: Fit the required number of rings onto the curtain pole, before positioning the pole on the brackets. Finish off by securing the brackets with the small screws provided.

Hallis Tip: For a smoother glide on your curtain rings we recommend spraying the pole with silicone spray beforehand.

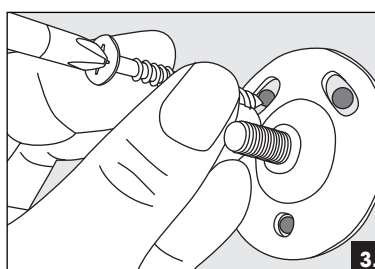
Step 9: Place the last ring on the outer side of the end bracket on both sides, before attaching the finial.



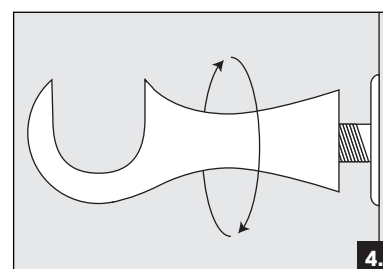
1.



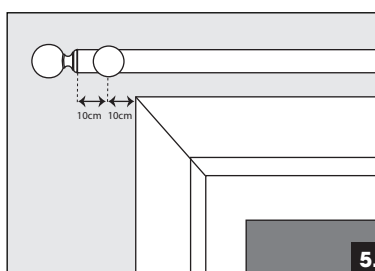
2.



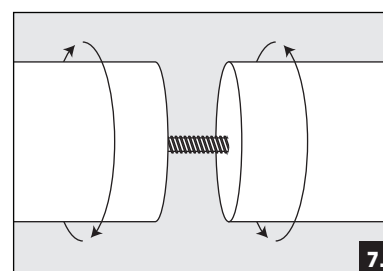
3.



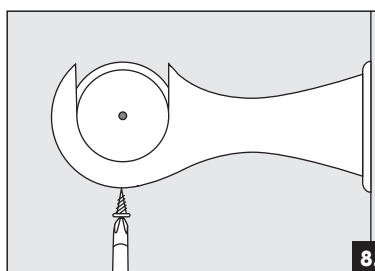
4.



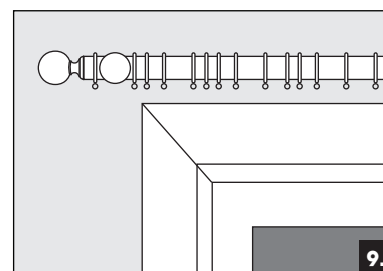
5.



7.



8.



9.